

**READ SAFETY DIRECTIONS  
BEFORE OPENING OR USING**

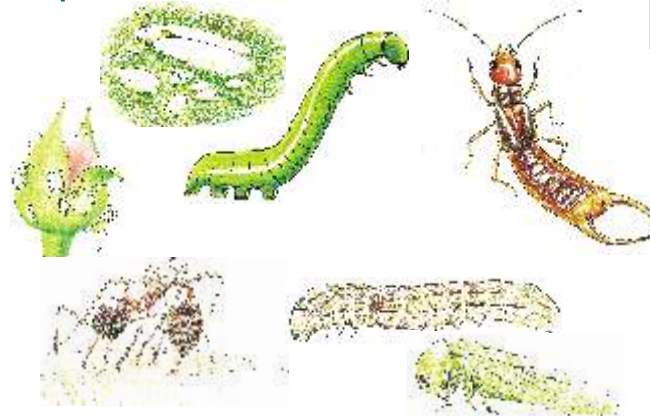
# Py-Bo

**Natural Pyrethrum Insecticidal Concentrate**

**ACTIVE CONSTITUENTS:** 80g/L PYRETHRINS

480g/LPIPERONYL BUTOXIDE

**For use on fruit and vegetable crops, cut flowers  
and ornamental plants for the control of insects  
as specified in the directions for use table.**



**CONTENTS 5 litres**

**Pestech Australia Pty Ltd**

7/14-28 Ivan St Arundel Q 4214

1800 12345 7

[www.pestech.com.au](http://www.pestech.com.au)

## DIRECTIONS FOR USE:

RESTRAINTS: DO NOT spray if rain is expected within 2 hours

DO NOT use on young seedlings.

DO NOT mist in windy conditions

Crop	Pests	Rate	Critical comments
Fruit and vegetable crops, cut flowers and ornamental plants	Aphids, ants, cabbage moth and other caterpillars, earwigs, leafhoppers, thrips and whiteflies.	Mix 1ml to 1 litre water or 100ml to 100litres of water	Mist or spray to contact the pests when infestation occurs. Thorough coverage of all foliage including under-surfaces is essential.

NOT TO BE USED FOR ANY PURPOSE OR IN ANY MANNER CONTRARY TO THIS LABEL UNLESS AUTHORISED UNDER APPROPRIATE LEGISLATION.

WITHHOLDING PERIOD: FRUIT AND VEGETABLES DO NOT HARVEST FOR 1 DAY AFTER APPLICATION

### GENERAL INSTRUCTIONS

#### APPLICATION

Shake the container before opening. Measure concentrate accurately into a small amount of water and stir/agitate this pre-mix thoroughly before adding to the full quantity of water. Do NOT mix more spray solution than you will need for the day. Do NOT mist in windy conditions. Application is best late in the day or early evening when bees and wasps are not present and because sunlight degrades the actives.

**PROTECTION OF LIVESTOCK** Dangerous to bees. DO NOT spray any plants in flower while bees are foraging.  
**PROTECTION OF WILDLIFE, FISH, CRUSTACEANS AND ENVIRONMENT:** Do NOT contaminate streams, rivers, or waterways with chemical or used containers.

#### STORAGE AND DISPOSAL

**KEEP OUT OF REACH OF CHILDREN.** Store in the closed original container in a cool, well ventilated area. Do NOT store for prolonged periods in direct sunlight. Triple rinse containers before disposal. Add rinsings to spray tank. Do NOT dispose of undiluted chemicals on site. If recycling, replace cap and return clean containers to recycler or designated collection point.

If not recycling, break, crush or puncture and bury empty containers in a Local Authority landfill. If not available, bury containers below 500mm in a disposal pit specifically marked and set up for this purpose, clear of waterways, desirable vegetation and tree roots. Empty containers and product should not be burnt.

#### SAFETY DIRECTIONS

Repeated exposure may cause allergic disorders. Sensitive workers should use protective clothing. Avoid contact with eyes and skin. Do not inhale vapour or spray mist. Wash hands after use.

**FIRST AID** If poisoning occurs contact a doctor or Poisons Information Centre. Phone Australia 13 11 26

#### MATERIAL SAFETY DATA SHEET

Additional information is listed in the Material Safety Data Sheet which can also be found on the website:

[www.pestech.com.au](http://www.pestech.com.au)

APVMA approval No 53738/1-5-20/0107

